

## Grow Processor Preferred® High Fermentable Corn and Enjoy Discounts on GM E85 Vehicles



Impala



Monte Carlo



Silverado



Sierra



Tahoe



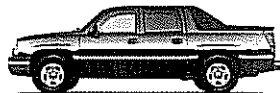
Suburban



Yukon



Yukon XL



Avalanche

- Confirm your local ethanol plant is participating in *Fuel Your Profits*™.
- Ask your local ethanol plant for the seed brands offering Processor Preferred® High Fermentable Corn products in your area.
- Choose the right Processor Preferred products for your farm.
- Choose a delivery point for your corn.
- Enroll in the *Fuel Your Profits* program before July 31, 2006 by logging on to [www.monsanto.com/fuelyourprofits](http://www.monsanto.com/fuelyourprofits)

All growers purchasing Processor Preferred seed to deliver to a participating ethanol plant or supporting elevator should enroll—regardless of how many units are purchased. Your enrollment can help the ethanol plant bring E85 benefits to your community.

### Sign Up to Drive Your Profits

Supporting your local ethanol plant through the *Fuel Your Profits* program can also deliver you substantial discounts on General Motors' E85 vehicles.

Purchase a minimum of 100 units of Processor Preferred High Fermentable Corn for the 2006 season and receive unlimited Reward Certificates good for:

- \$3,100 off E85 Impala and Monte Carlo vehicles.
- \$5,300 off E85 Silverado and Sierra trucks.
- \$5,500 off E85 Tahoe, Yukon, Yukon XL and Suburban SUVs.
- \$6,900 off E85 Avalanche trucks.

All discounts are off Dealer invoice.

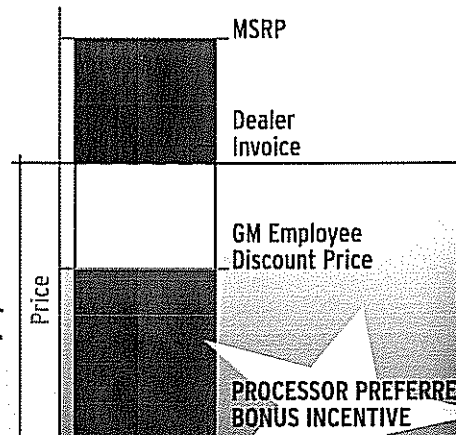
**User Terms and Conditions: Reward Certificate(s) will only be available with enrollment until April 3, 2006 and vehicles must be ordered by April 15, 2006.**

1. GM E85 vehicle(s) must be ordered through a local GM Dealer. (Typical delivery is 6 to 8 weeks after order is placed.)
2. Give your local GM Dealer the Processor Preferred *Fuel Your Profits* Reward Certificate at the time of ordering your vehicle.
3. Reward Certificate(s) will only be available with enrollment until April 3, 2006.
4. 2006 models will be available for order until April 15, 2006.
5. Processor Preferred *Fuel Your Profits* Reward Certificate(s) may not be combined with any other offer.
6. GM Credit Card points are not eligible to be used in conjunction with this offer.
7. If local or retail incentives in effect at the time your new vehicle is delivered exceed the Processor Preferred *Fuel Your Profits* Reward Certificate, your GM Dealer will assist you in receiving the maximum benefit from the difference.
8. Only original Processor Preferred *Fuel Your Profits* Reward Certificate(s) are valid and will be honored by participating GM dealerships.
9. Eligible corn growers can obtain additional Processor Preferred *Fuel Your Profits* Reward Certificate(s) through the enrollment website at [www.monsanto.com/fuelyourprofits](http://www.monsanto.com/fuelyourprofits).

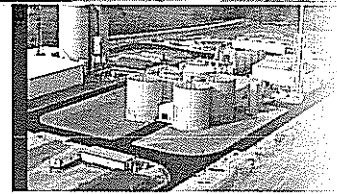
### Allowances for Eligible E85 Models

	\$ Off Dealer Invoice
Impala, Monte Carlo	\$3,100
Silverado, Sierra	\$5,300
Tahoe, Suburban, Yukon, Yukon XL	\$5,500
Avalanche	\$6,900

### Example: Silverado



# Get Yield *in* Your Field *and* Your Ethanol Plant



*More* **American  
Renewable Fuel  
Per Bushel.**  
**Increase Returns  
*and* Ethanol Yields**

*Processor Preferred®  
High Fermentable Corn  
can deliver Yield in the Field  
*and* Higher Levels  
of Fermentable Starch  
*in dry grind  
ethanol production.**



Processor  
**P**referred.  
Committed to Value

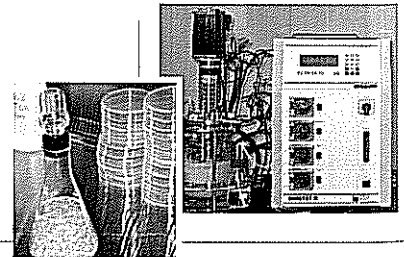
## **More Ethanol Per Bushel** *plus...*

- **INCREASE** ethanol yield potential for dry grind processors
- **REDUCE RELIANCE** on foreign oil
- **IMPROVE** potential return for grower investors
- **SUPPORT** a cleaner environment
- Competitive agronomics and **YIELD** in the field

Processor Preferred® High Fermentable Corn offers biotech traits and genetic diversity for more choices for growers through over 90 independent seed brands. These hybrids can provide more ethanol per bushel at your local ethanol plant.

## **Experience** *the Value of Research*

Monsanto's in-lab scale fermentations provide the reference chemistry behind hybrid designations and grain analysis calibrations.



During fermentation, High Performance Liquid Chromatography (HPLC) measures the concentration of ethanol in the mash and provides crucial information on the quality of fermentation for a wide genetic base of corn.

All starch is not the same. Fermentable starch for dry grind ethanol processing is a subset of total starch and different from extractable starch used for wet milling. Monsanto has developed a calibration software tool for grain analysis to measure fermentable starch. This aids the sourcing and utilization of corn that yields more ethanol.

